

# Inlets/outlets

## Accessories for side channel blowers

### Inlet/outlet for hose pipe in cast aluminum

Type no.	D [mm]	d [mm]	H [mm]	L [mm]	P [mm]	Fig. [mm]	For model
1-OD-32	32	5.5	29	35	50	1	KB-1...
2-OD-32	32	6	31	38	64	1	KB-2..., KB-23...
2-OD-37	37	6	31	38	64	1	KB-2..., KB-23...
3-OD-44	44	6	37	44	67	1	KB-3..., KB-33...
3-OD-51	51	6	31	38	67	1	KB-3..., KB-33...
4-OD-50	50	7	44	52	83	1	KB-4..., KB-5..., KB-6..., KB-43..., KB-63..., KB-64...
4-OD-57	57	7	58	65	83	1	KB-4..., KB-5..., KB-6..., KB-43..., KB-63..., KB-64...
3-OD-44-2	44	7	28	57	67	2	KB-3..., KB-33...
3-OD-55-2	55	7	52	105	67	2	KB-3..., KB-33...

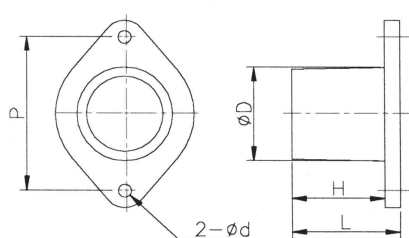


Fig. 1

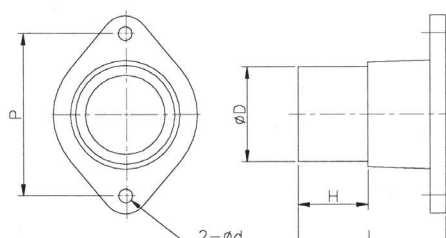


Fig. 2



### Threaded inlet/outlet (part 16 in drawing on page 30-31)

Type no.	Thread (BSPT)	d [mm]	H [mm]	L [mm]	P [mm]	Fig. [mm]	For model
1-T10	1"	5.5	18	23	50	3	KB-1...
2-T12	1 1/4"	6	22	29	64	3	KB-2..., KB-23...
3-T15	1 1/2"	6	24	31	67	3	KB-3..., KB-33...
5-T20	2"	7	18	25	83	3	KB-4..., KB-5..., KB-6..., KB-43..., KB-63..., KB-64...
7-T25	2 1/2"	7	16	31	130	4	KB-7..., KB-8..., KB-83..., KB-84...
9-T40	4"	9	29	36	150	3	KB-9...

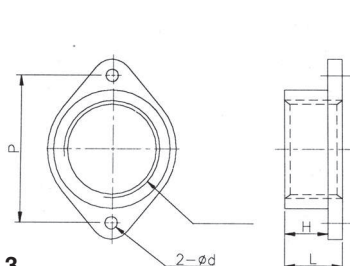


Fig. 3

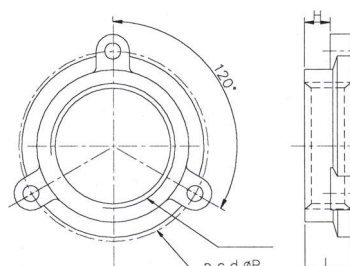


Fig. 4

